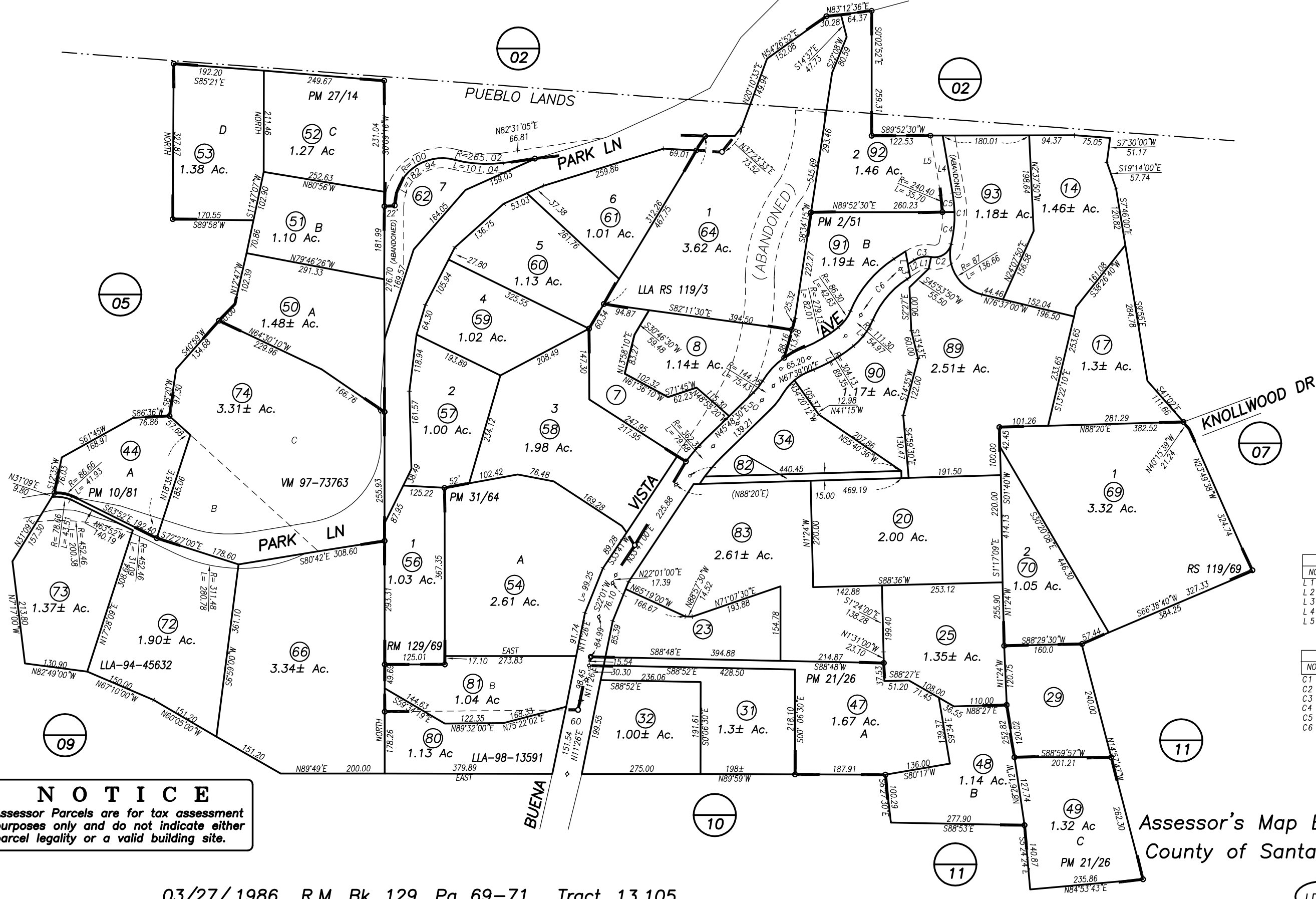
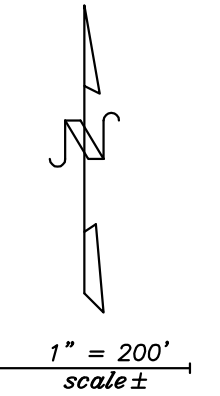


POR. PUEBLO LANDS

007-06



LINE TABLE		
NO.	BEARING	DISTANCE
L 1	N11°33'30"E	25.00
L 2	N57°11'27"E	15.68
L 3	N10°10'07"W	54.18
L 4	N9°49'00"W	121.02
L 5	S9°49'00"E	125.29

CURVE TABLE		
NO.	RADIUS	LENGTH
C 1	265.40	107.46
C 2	35.61	54.80
C 3	47.67	36.52
C 4	265.40	67.42
C 5	265.40	40.04
C 6	212.24	128.42

NOTICE
Assessor Parcels are for tax assessment purposes only and do not indicate either parcel legality or a valid building site.

Assessor's Map Bk, 007-Pg, 06
County of Santa Barbara, Calif.